

# Introducing

The Highest Acoustical Ratings  
in the Architectural  
Wood Door Industry

**Soundwood**<sup>TM</sup>  
ACOUSTICAL WOOD PRODUCTS BY EGGERS 

**STC 49-52**



**Eggers Industries**

## High-Performance Acoustical Doors with Lites

Eggers is proud to offer the highest acoustical ratings in the industry but we are also thrilled to be able to provide you with options. The STC 49 and 50 are available with a 100 sq. in. lite opening with standard lip wood bead.

This is a special construction 1-1/8" insulated glass unit that must be supplied and factory glazed by Eggers.

ENGINEERING SPECIFICATIONS		STC 49 and STC 50
	STC 49	STC 50
Sizes	Min. 2'-0" x 6'-0" Max. 4'-0" x 8'-0"	
Thickness	1-3/4"	
Frame	Grouted 16 gauge welded steel	
Stiles	Veneered stile meets Extra Heavy Duty WDMA I.S. 1A Performance Level	
Rails	Structural Composite Lumber Core (SCL)	
Faces	Wood Veneers	
Fire-Rating	N/A	
Lites	100 sq. in. - standard lip wood bead - 1-1/8" IGU	
Latching Hardware	Single point latch - cylindrical or mortise lock	
Hinges	Level swing - butt hinges	
Gasket System	U	S or T
Undercut	3/8"	3/8"
Test Report	C7672.01A	C5765.04
Weight Per. Square Foot	12.0	
LEED® Contributions	LEED® MR4 - Recycled Content, EQ4.4 No Added Urea-Formaldehyde	
Standards	ASTM E90, E413	



## Principle Benefits and Features of these Constructions

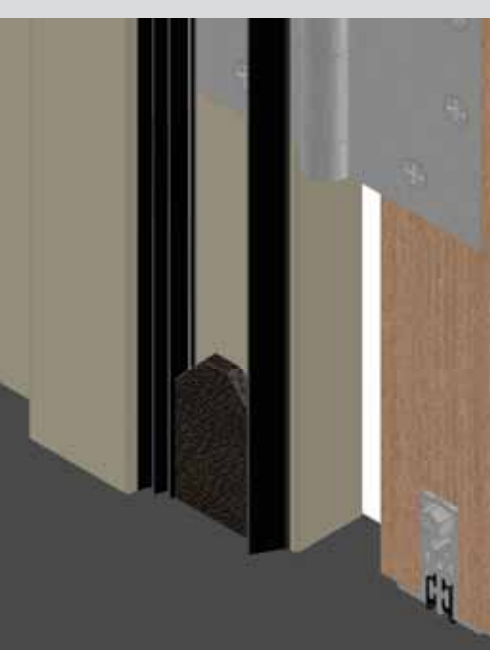
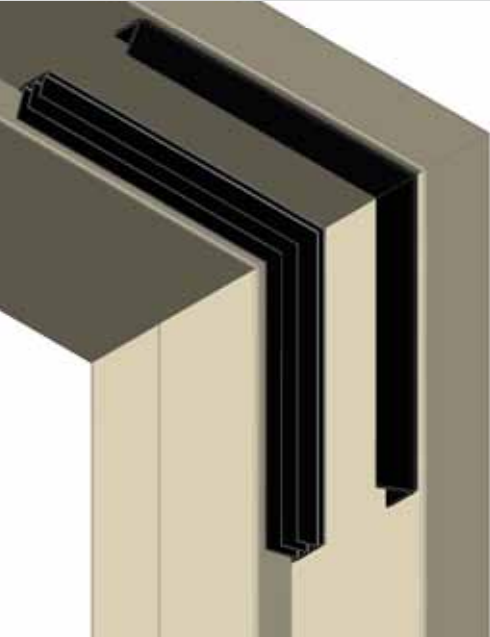
- Highest STC-rated 1-3/4" wood doors available
- Available with automatic door bottom or raised threshold
- Fixed or adjustable frame seals available
- Includes 1/8" total lead thickness which provides x-ray protection
- Meets LEED® EQ 4.4 - Low-Emitting Materials, No Added Urea Formaldehyde
- True wood composite construction - patent pending
- The standard constructions for these doors include a full width top block for screw attachment of surface mounted closers.

	ENGINEERING SPECIFICATIONS	
	STC 51 AND STC 52	
	STC 51	STC 52
Sizes	Min. 2'-0" x 6'-0" Max. 4'-0" x 8'-0"	
Thickness	1-3/4"	
Frame	Grouted 16 gauge welded steel	
Stiles	Veneered stile meets Extra Heavy Duty WDMA I.S. 1A Performance Level	
Rails	Structural Composite Lumber Core (SCL)	
Faces	Wood Veneers	
Fire-Rating	N/A	
Lites	N/A	
Latching Hardware	Single point latch - cylindrical or mortise lock	
Hinges	Level swing - butt hinges	
Gasket System	U	S or T
Undercut	3/8"	3/8"
Test Report	C5765.03	
Weight Per. Square Foot	12.0	
LEED® Contributions	LEED® MR4 - Recycled Content, EQ4.4 No Added Urea-Formaldehyde	
Standards	ASTM E90, E413	



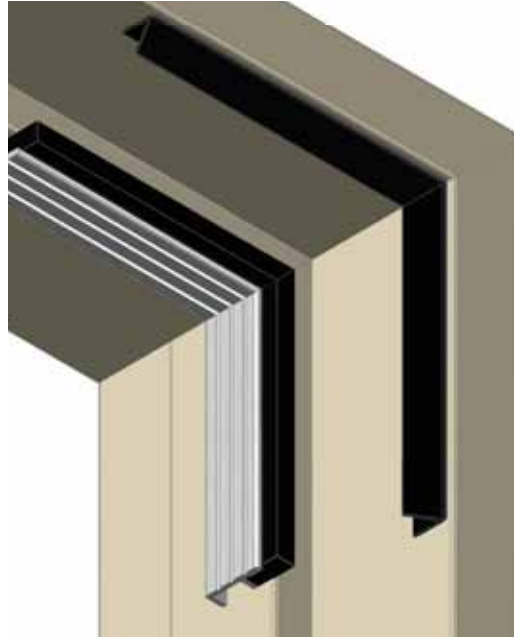
## GASKET SYSTEM U

Pemko S44, Pemko S773, Pemko ACP112 and Pemko 411 auto door bottom



## GASKET SYSTEM S

Pemko S44, Pemko 312CR with ER9, and Pemko 2008 STCxQ380 raised threshold



## GASKET SYSTEM T

Pemko S44, Pemko S773 and Pemko 2008STCxQ380 raised threshold



**Stile and Rail Doors, Door Frames  
Veneered Components, Plywood**

**Two Rivers Division**  
One Eggers Drive  
Two Rivers, WI 54241  
Phone: 920.793.1351  
Fax: 920.793.2958

**Flush Doors**

**Neenah Division**  
164 North Lake Street  
Neenah, WI 54956  
Phone: 920.722.6444  
Fax: 920.722.0357

**Architectural Veneer Faces,  
Custom Wood Products, Plywood**

**Kentucky Division**  
2125 Lake Jericho Road  
Smithfield, KY 40068  
Phone: 502.845.0154  
Fax: 502.849.0444