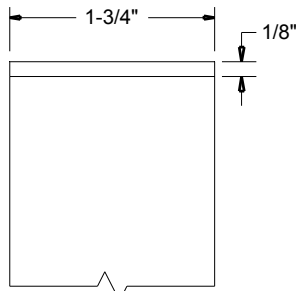
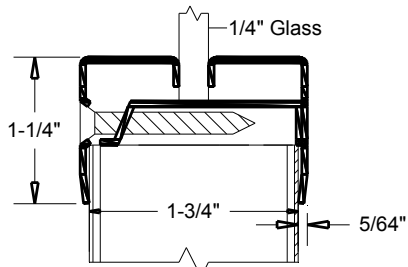


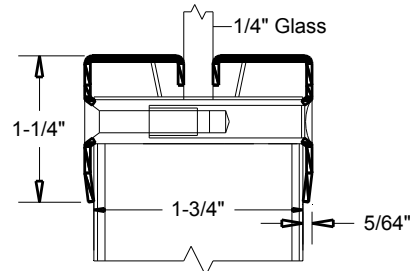
DOOR SECTIONAL DETAILS



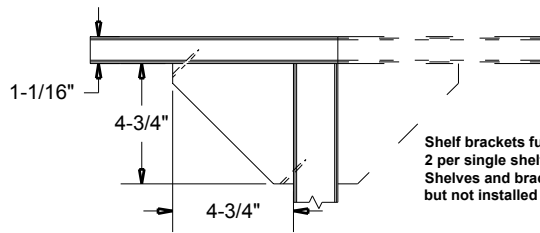
**Flat PVC
(GEON) Edge**



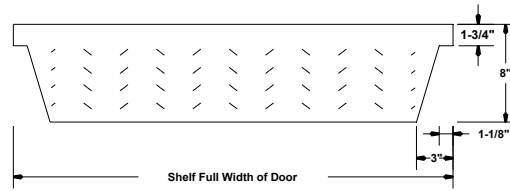
**#110 Metal
Vision Panel**



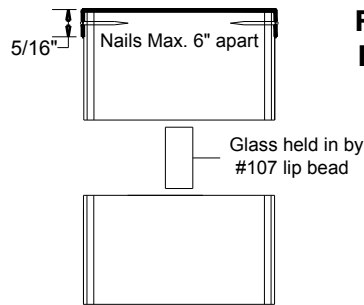
Type #110B
Security head of screw
corridor side



Shelf brackets furnished as shown:
2 per single shelf, 4 per double shelf.
Shelves and brackets packed together
but not installed unless requested.

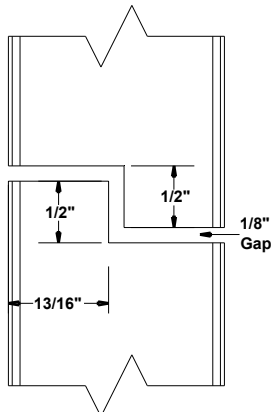


Standard Dutch Door Shelf

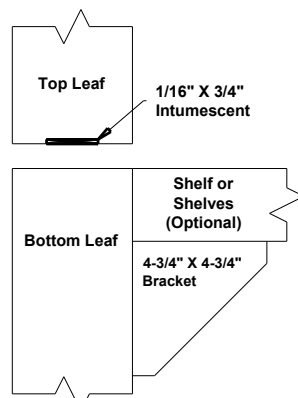


Flashing On Top Of Door For Exterior Applications

Stock metals:
Aluminum .015 - 26 Gauge
Top flashing installed in field
unless requested by customer.

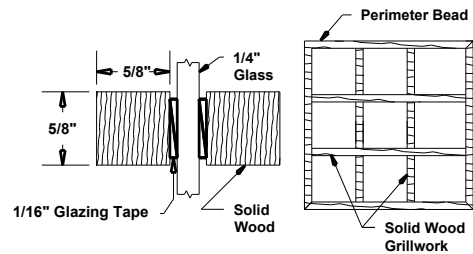


**Standard Rabbet
Door & Transom**



**20 Minute Dutch
Door Detail**

Grillwork Details



Solid wood grillwork gives you the appearance
of divided lites in your fire doors. Profile is similar
in appearance to Eggers veneer wrapped bead
in 45, 60 and 90 minute and wood bead #100 in
20 minute and non-rated doors.

**DOORS MUST BE GLAZED WITH BEAD AND
GRILLWORK APPLIED IN THE FACTORY**