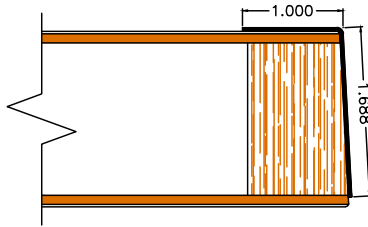


Metal Edges Construction Details

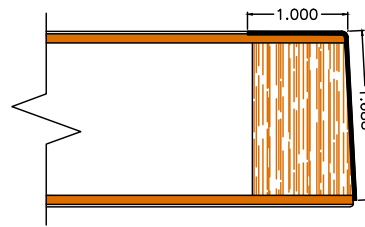


Eggers Industries

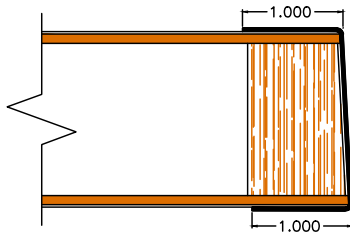
Date: November 2017



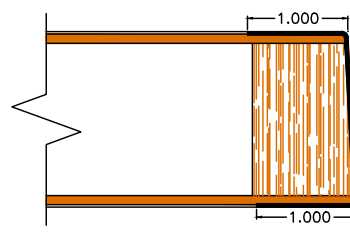
"L" SHAPED EDGE PROTECTOR
SURFACE APPLIED
ALL METAL STAMPING EDGES
#231 #233 #232 #235



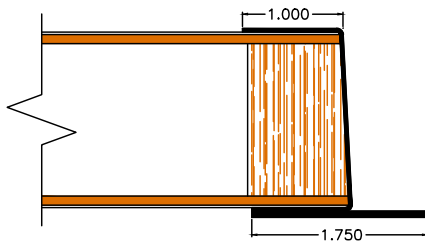
"L" SHAPED EDGE PROTECTOR
RECESSED FLUSH TO FACE
ALL METAL STAMPING EDGES
#231 #233 #232 #235



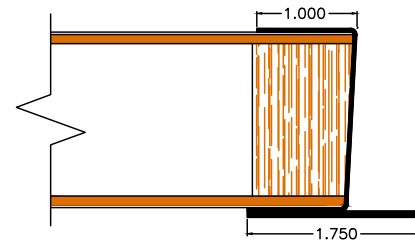
METAL EDGE PROTECTOR
SURFACE APPLIED
ALL METAL STAMPING EDGES
#206 #216 #227 #230 #234



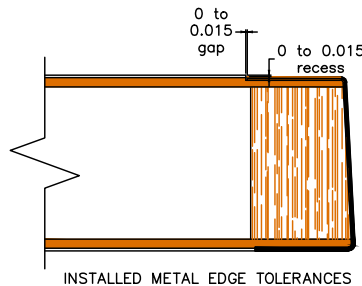
METAL EDGE PROTECTOR
RECESSED FLUSH TO FACE
ALL METAL STAMPING EDGES
#206 #216 #227 #230 #234



REVERSE BEVELED ASTRAGAL
ALL METAL STAMPING EDGES
#210 #204 (no bevel)



STD. BEVELED ASTRAGAL
ALL METAL STAMPING EDGES
#205



INSTALLED METAL EDGE TOLERANCES



Eggers Industries

Stile and Rail Doors, Door Frames, Plywood, and Veneered Components

Two Rivers Division
One Eggers Drive
Two Rivers, WI 54241

Phone: 920-793-1351
Fax: 920-793-2958

Flush Doors and Palladium® Door

Neenah Division
164 North Lake Street
Neenah, WI 54956

Phone: 920-722-6444
Fax: 920-722-0357